

For Lease

1,400-7,833 SF



Property Features

- Available:
 - Entire Second Floor: 7,833 RSF with Private Restrooms (Prominent Building Signage Off Toll Road Is Available with Lease of Entire 2nd Floor)
 - Suite 200: 5,450 SF
 - Suite 300: 1,536 SF
- 3:1000 Parking with Covered Garage Spaces Available
- Excellent Accessibility to Dallas North Tollway
- Large Offices, Conference Room & Reception Area
- Upgraded Finishes

James Davis

214 256 7103
jdavis@nairl.com

Grant Frerichs

214 256 7146
gfrerichs@nairl.com

Stone Plaza
16600 N. Dallas Parkway
Dallas, Texas 75248



THE INFORMATION CONTAINED HEREIN HAS BEEN GIVEN TO US BY THE OWNER OF THE PROPERTY OR OTHER SOURCES WE DEEM RELIABLE. WE HAVE NO REASON TO DOUBT ITS ACCURACY, BUT WE DO NOT GUARANTEE IT. ALL INFORMATION SHOULD BE VERIFIED PRIOR TO PURCHASE OR LEASE.

4851 LBJ Freeway 10th Floor
Dallas TX 75244
214 256 7100

nairl.com

For Lease

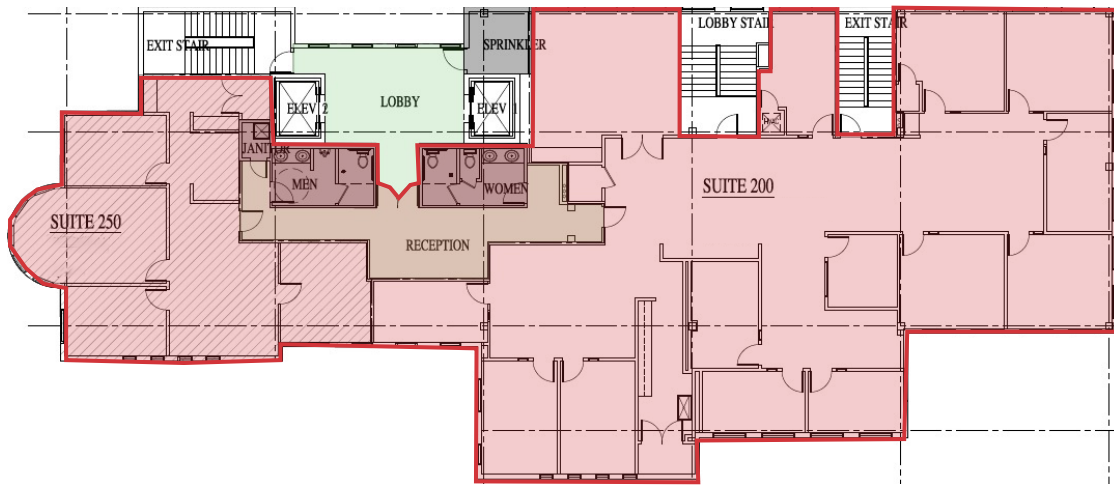
1,400-7,833 SF

Stone Plaza 16600 N. Dallas Parkway

Dallas, Texas 75248

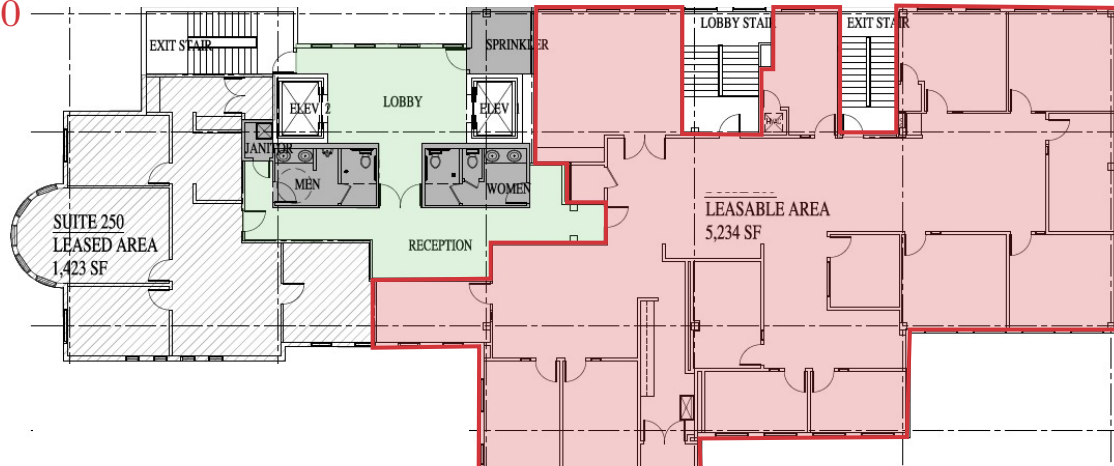
Entire Second Floor

7,833 RSF



Suite 200

5,450 SF



Suite 300

1,536 SF

